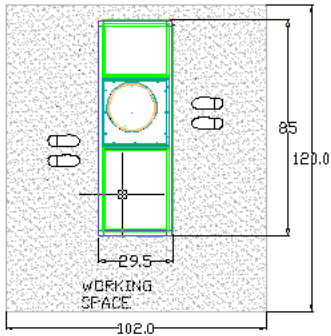


University of Wisconsin Arctic HSRL

Instrument Environment Requirements



Instrument Size:

Height = 82.1" Length = 85" Width = 29.5"

(Will fit through standard doorway.)

Center of transmit/receive light is 34.25" from end of instrument at exit with 4 degree angle from vertical as shown.

Ceiling window:

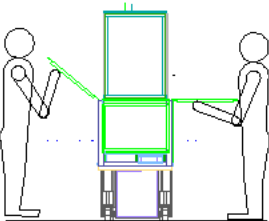
Anti-reflection coated thermo-pane window

Warmed by heat lamp to prevent frost

18" clear aperture

5-degree slope to drain water

Flush mounting to prevent snow drifting on window

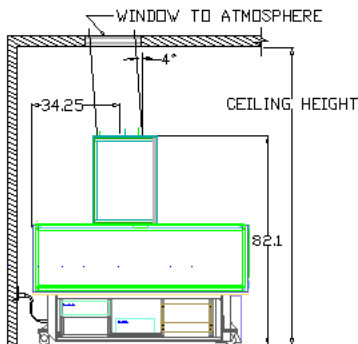


Working Space:

82" X 120" for maintenance persons

(instrument: minimum 6" from wall)

-possible to operate in narrower space, but inconvenient



Electrical:

120V, 30A(circuit breaker) (uses ~25 A)

Lidar has 16ft. power cord w/NEMA twist-lock plug.

Temperature:

Room Temperature (60-75 F)

Communication:

Requires internet connection (~16 kb/s average data rate)

Shipping crate sizes:

Box 1: 96" X 40" X 40" (collapsible boxes, can be

Box 2: 96" X 40" X 36" stored outdoors)

Box 3: 38" X 38" X 40"